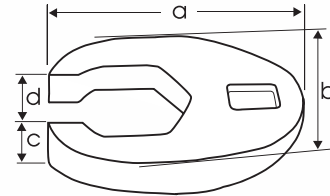
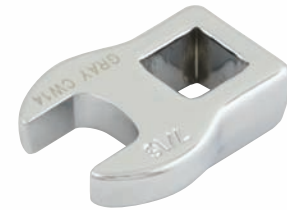


3/8" Drive SAE Flare Nut Crowfoot Wrenches

Opening Size	Mirror Chrome Part No.	Overall Length in. a	Head Width in. b	Head Thickness in. c	Slot Width in. d	Weight lbs.
3/8"	CWF12	1.43"	1.06"	.33"	.29"	0.09
7/16"	CWF14	1.44"	1.07"	.33"	.38"	0.09
1/2"	CWF16	1.46"	1.07"	.33"	.39"	0.09
9/16"	CWF18	1.60"	1.21"	.37"	.50"	0.11
5/8"	CWF20	1.60"	1.22"	.38"	.51"	0.11
11/16"	CWF22	1.71"	1.37"	.42"	.56"	0.13
3/4"	CWF24	1.73"	1.39"	.42"	.61"	0.13

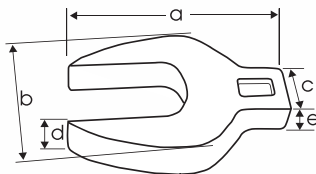


3/8" Drive Metric Flare Nut Crowfoot Wrenches

Hex Size	Mirror Chrome Part No.	Overall Length mm a	Head Width mm b	Head Thickness mm c	Slot Width mm d	Weight lbs.
10mm	CWF10M	37	27	8.8	8	0.07
11mm	CWF11M	37	27	8.8	9	0.07
12mm	CWF12M	37.3	27	8.8	9.5	0.09
13mm	CWF13M	37.5	27	8.8	10.5	0.09
14mm	CWF14M	42.7	31.4	9.8	12	0.11
15mm	CWF15M	42.8	30.7	9.9	12.7	0.11
16mm	CWF16M	43	30.7	9.9	13.6	0.11
17mm	CWF17M	46.4	34	10.8	14.3	0.13
18mm	CWF18M	46.4	34	10.8	16.3	0.13
19mm	CWF19M	46.6	34.2	10.8	16.5	0.13

3/8" Drive SAE Open End Crowfoot Wrenches

Opening Size	Mirror Chrome Part No.	Overall Length in. a	Head Width in. b	Handle Width in. c	Head Thickness in. d	Handle Thickness in. e	Weight lbs.
3/8"	CW12	1.31"	.91"	.72"	.20"	.43"	0.04
7/16"	CW14	1.23"	.91"	.72"	.22"	.32"	0.04
1/2"	CW16	1.48"	1.06"	.72"	.23"	.35"	0.07
9/16"	CW18	1.63"	1.21"	.72"	.27"	.37"	0.09
5/8"	CW20	1.63"	1.34"	.74"	.29"	.36"	0.09
11/16"	CW22	1.76"	1.45"	.84"	.29"	.37"	0.11
3/4"	CW24	1.88"	1.58"	.77"	.33"	.44"	0.15
13/16"	CW26	1.96"	1.70"	.83"	.31"	.38"	0.15
7/8"	CW28	2.07"	1.83"	.81"	.38"	.42"	0.20
1"	CW32	2.21"	2.03"	.74"	.40"	.53"	0.24



3/8" Drive Metric Open End Crowfoot Wrenches

Hex Size	Mirror Chrome Part No.	Overall Length mm a	Head Width mm b	Handle Width mm c	Head Thickness mm d	Handle Thickness in. e	Weight lbs.
10mm	CW10M	26.2	20.9	16.2	4.85	7.85	0.02
11mm	CW11M	31.5	23.5	18.4	5.35	7.85	0.04
12mm	CW12M	37.7	27	18.5	6	8.9	0.07
13mm	CW13M	37.7	27	18.5	6	8.9	0.07
14mm	CW14M	41.3	31.5	17.7	7.7	8.9	0.09
15mm	CW15M	41.6	34	18.9	7.5	9.6	0.11
16mm	CW16M	41.6	34	18.9	7.5	9.6	0.11
17mm	CW17M	43.7	36.85	20.4	7.3	9.6	0.13
18mm	CW18M	43.7	36	21	7.5	9.6	0.13
19mm	CW19M	47.8	40.5	19.6	7.5	10.25	0.13
21mm	CW21M	50	43.4	20.1	8.6	10.8	0.18
22mm	CW22M	52.7	46.8	20.8	9.85	11	0.22
24mm	CW24M	56.1	52	18.7	11.3	12.6	0.26